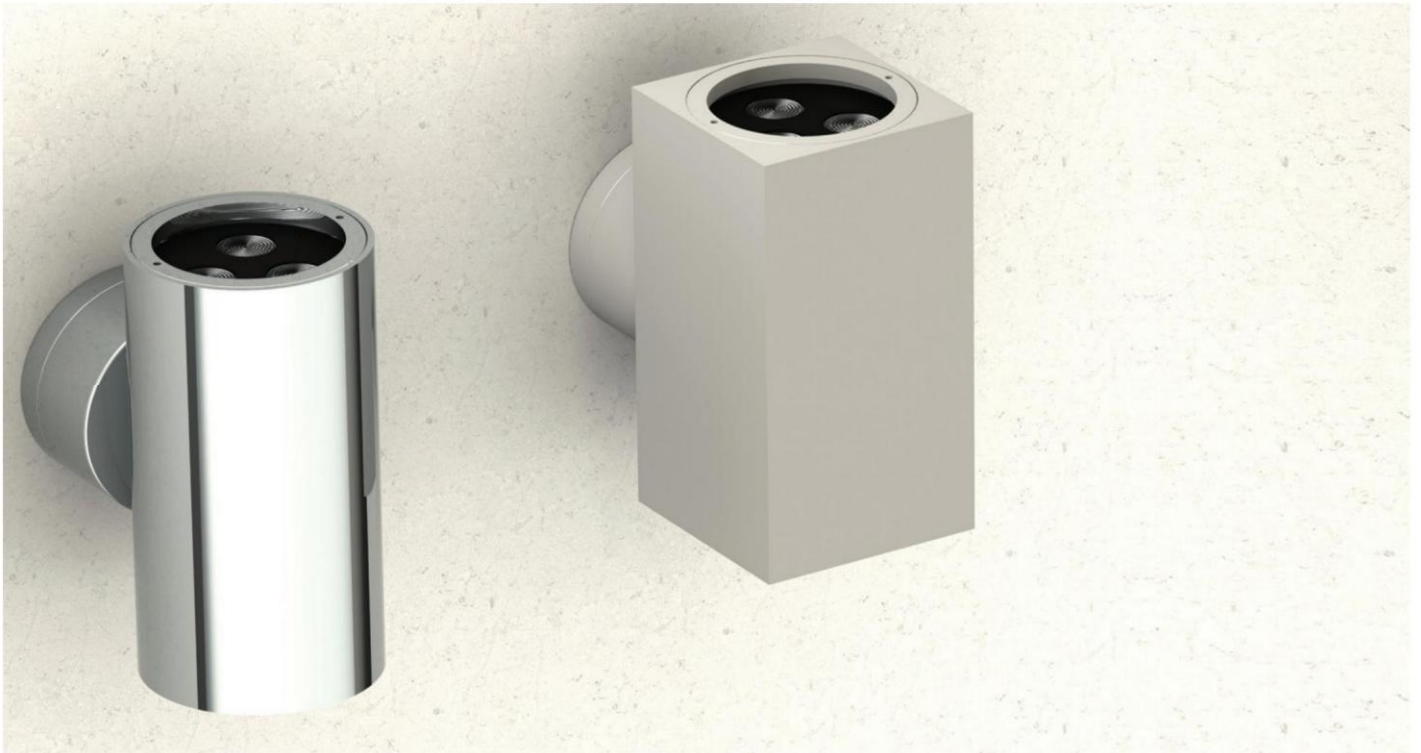


BEAM 5 / BEAM 6 LED IP65



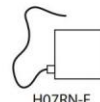
Surface wall mounted luminaire with power LED chip. It is ideal for a wide range of outdoor applications due to its high protection degree IP65. Available with one or two-way light distribution and with different beam angles.

Technical Features

- Aluminium body, painted electrostatically in selected colour.
- Mounting base from die-cast aluminium.
- Tempered protection glass.
- Beam distribution lens.
- Silicone sealant.
- Pure light without IR/UV radiation.
- From 3W with 300 Lumen up to 12W 900 Lumen.
- Operation life: 50,000 hours with efficiency > 70% of the initial luminous flux.

Upon request:

Available with highest colour rendering index (CRI)



To ensure the degree of protection (sealing), the use of flexible power supply cable type H07RN-F is required.

BEAM 5 / BEAM 6 LED IP65

BEAM 5 - ONE WAY

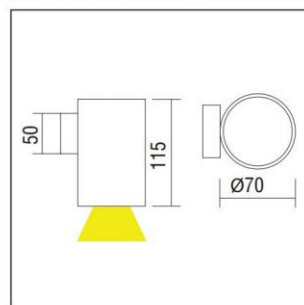


CE F 850°C IP 65

LED ta 25°C 350/500mA

- Beams: Spot, Medium, Wide.
 - 3x1W power consumption driven at 350mA.
 - 3x2W power consumption driven at 500mA.
 - Efficiency:
 3x1W: 4000 K: 321 Lumen, CRI: min. 75
 3x1W: 3000 K: 300 Lumen, CRI: min. 80
 3x2W: 4000 K: 450 Lumen, CRI: min. 75
 3x2W: 3000 K: 420 Lumen, CRI: min. 80
 Maximum: 107 Lm/W

Code	Description	Kg
85751	BEAM5 ONE WAY 3 LED x 1W (Integrated Control Gear)	0,700
85752	BEAM5 ONE WAY 3 LED x 2W (Integrated Control Gear)	0,700



BEAM 5 - TWO WAY

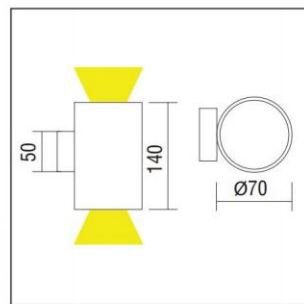


CE F 850°C IP 65

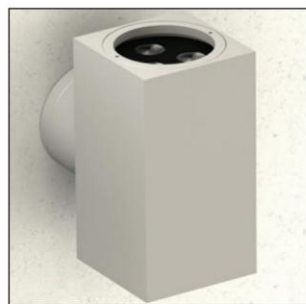
LED ta 25°C 350/500mA

- Beams: Spot, Medium, Wide.
 - 6x1W power consumption driven at 350mA.
 - 6x2W power consumption driven at 500mA.
 - Efficiency:
 3+3x1W: 4000 K: 321+321 Lumen, CRI: min. 75
 3+3x1W: 3000 K: 300+300 Lumen, CRI: min. 80
 3+3x2W: 4000 K: 450+450 Lumen, CRI: min. 75
 3+3x2W: 3000 K: 420+420 Lumen, CRI: min. 80
 Maximum: 107 Lm/W

Code	Description	Kg
85756	BEAM5 TWO WAY 3+3LED x1W (Integrated Control Gear)	1,000
85757	BEAM5 TWO WAY 3+3LED x2W (Integrated Control Gear)	1,000



BEAM 6 - ONE WAY

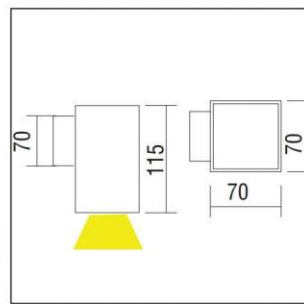


CE F 850°C IP 65

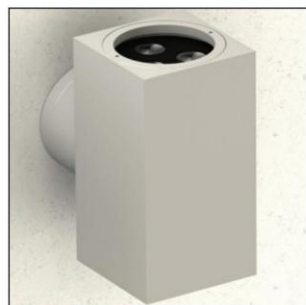
LED ta 25°C 350/500mA

- Beams: Spot, Medium, Wide.
 - 3x1W power consumption driven at 350mA.
 - 3x2W power consumption driven at 500mA.
 - Efficiency:
 3x1W: 4000 K: 321 Lumen, CRI: min. 75
 3x1W: 3000 K: 300 Lumen, CRI: min. 80
 3x2W: 4000 K: 450 Lumen, CRI: min. 75
 3x2W: 3000 K: 420 Lumen, CRI: min. 80
 Maximum: 107 Lm/W

Code	Description	Kg
85761	BEAM6 ONE WAY 3 LED x 1W (Integrated Control Gear)	1,200
85762	BEAM6 ONE WAY 3 LED x 2W (Integrated Control Gear)	1,200



BEAM 6 - TWO WAY

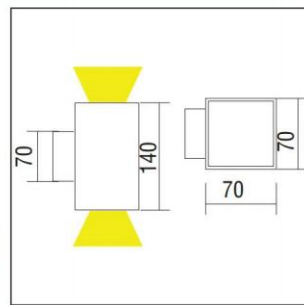


CE F 850°C IP 65

LED ta 25°C 350/500mA

- Beams: Spot, Medium, Wide.
 - 6x1W power consumption driven at 350mA.
 - 6x2W power consumption driven at 500mA.
 - Efficiency:
 3+3x1W: 4000 K: 321+321 Lumen, CRI: min. 75
 3+3x1W: 3000 K: 300+300 Lumen, CRI: min. 80
 3+3x2W: 4000 K: 450+450 Lumen, CRI: min. 75
 3+3x2W: 3000 K: 420+420 Lumen, CRI: min. 80
 Maximum: 107 Lm/W

Code	Description	Kg
85766	BEAM6 TWO WAY 3+3LED x1W (Integrated Control Gear)	1,500
85767	BEAM6 TWO WAY 3+3LED x2W (Integrated Control Gear)	1,500



LED COLOUR CODES:

2 Warm 3 Neutral

Beams Codes:

10 spot/spot 30 medium/medium 45 wide/wide 90 spot/medium 91 spot/wide 92 medium/wide

Colour Codes:

0 Colours 1 White 2 Titan 3 Black 4 Chrome 5 matt Alum.