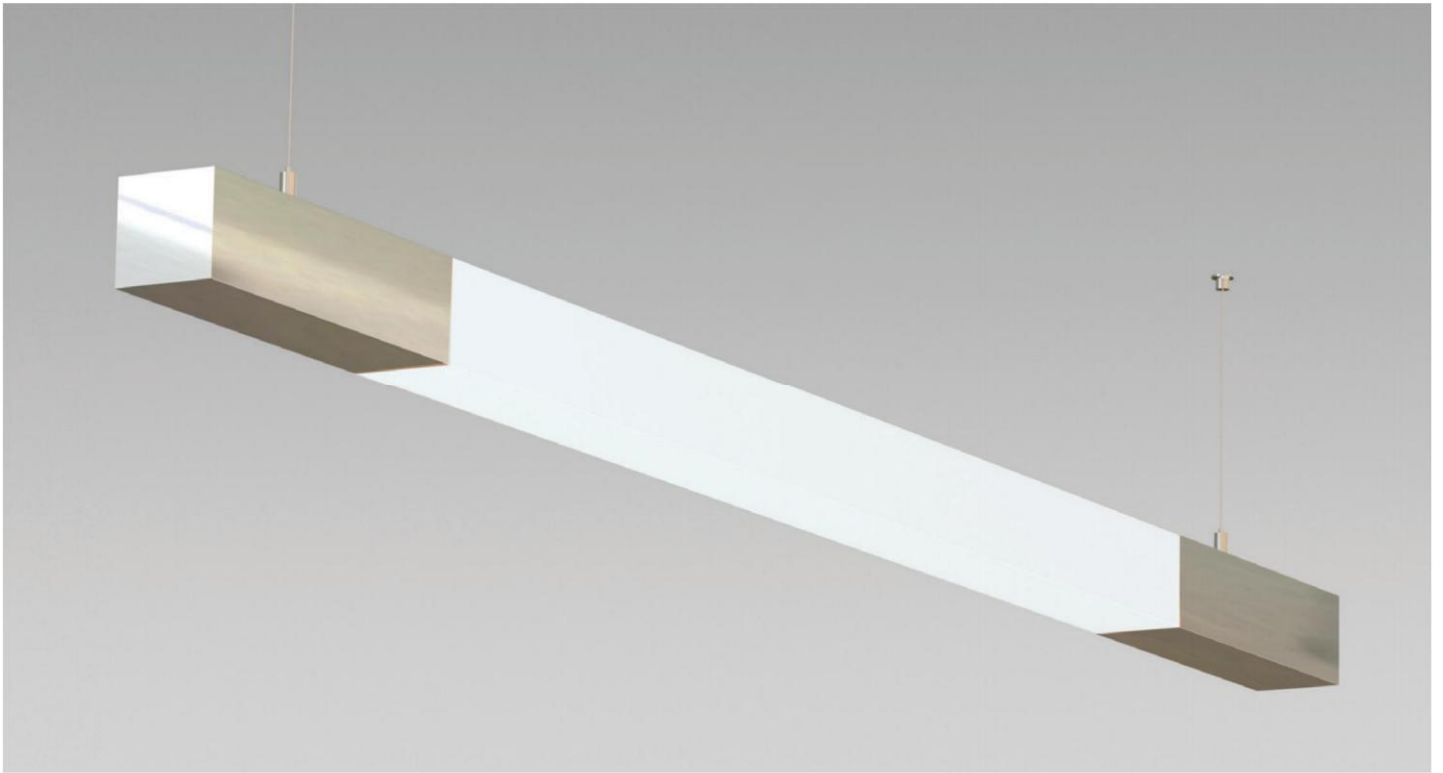


**SLOTLIGHT - PLEXI CENTER**

---



---

A linear suspended luminaire with impressive design. The luminaire unit is made of an opal diffuser and raises the architectural interest because it appears almost immaterial. It is ideal for applications where diffuse lighting must be combined an elegant shape.

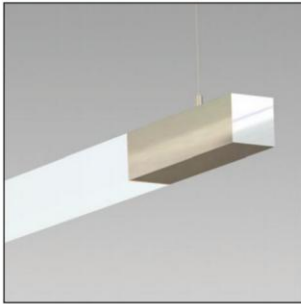
**Technical Features**

---

- Body of plated aluminum profile.
- Opal PMMA diffuser.
- Adjustable suspension consisting of stainless steel cable and regulators.
- Connection for operation on 230V-50/60Hz with electronic ballast.

SLOTLIGHT - PLEXI CENTER

SLOTLIGHT - PLEXI CENTER



|     |   |          |       |
|-----|---|----------|-------|
| CE  | F | ⊕        | IP 43 |
| T16 |   |          |       |
| G5  |   |          |       |
|     |   | Included |       |
|     |   |          |       |

- Version for T16/G5.
- Opal PMMA diffuser.

| Code   | Description                    |
|--------|--------------------------------|
| 950034 | Slotlight - Plexi Center 1x54W |
| 950044 | Slotlight - Plexi Center 1x80W |

