



OSRAM: DECOSTAR 51  
PHILIPS: MASTERLINE

PAR 16

**SOL 1 Mini**  
(RECESSED LUMINAIRES)

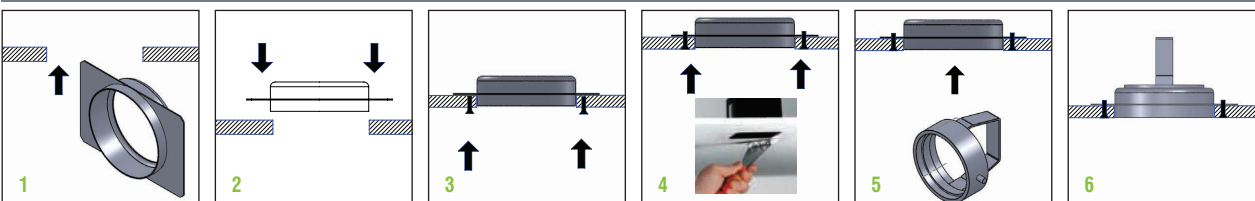
- Outer ring of diecast aluminium with support fins.
- Inner adjustable ring of diecast aluminium.
- Lampholder (lamp-holding ) ring of diecast aluminium.



|       |                             |      |              |                     | PRICE LIST           |                             |
|-------|-----------------------------|------|--------------|---------------------|----------------------|-----------------------------|
| CODE  | DESCRIPTION                 | HOLE | INNER HEIGHT | COLOUR              | Without Control Gear |                             |
| 86751 | SOL1 MINI QR-CBC 51 / GU5.3 | 105  | 60           | White, Titan, Black |                      | + Transformer 12V Selection |
| 86752 | SOL1 MINI PAR16 / GU10      | 105  | 60           | White, Titan, Black |                      |                             |
| 86751 | SOL1 MINI QR-CBC 51 / GU5.3 | 105  | 60           | Colours             |                      | + Transformer 12V Selection |
| 86752 | SOL1 MINI PAR16 / GU10      | 105  | 60           | Colours             |                      |                             |

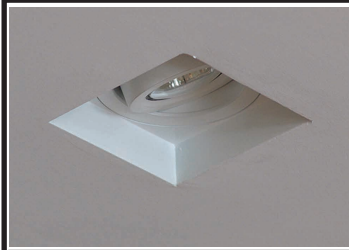


**INSTALLATION**



**Colour Codes:**

**1** White **2** Titan **3** Black **0** Colours



OSRAM: DECOSTAR 51  
 PHILIPS: MASTERLINE

PAR 16

**SOL 1 Q Mini**  
 (RECESSED LUMINAIRES)

- Outer frame of diecast aluminium with support fins.
- Inner adjustable ring of diecast aluminium.
- Lampholder (lamp-holding ) ring of diecast aluminium.

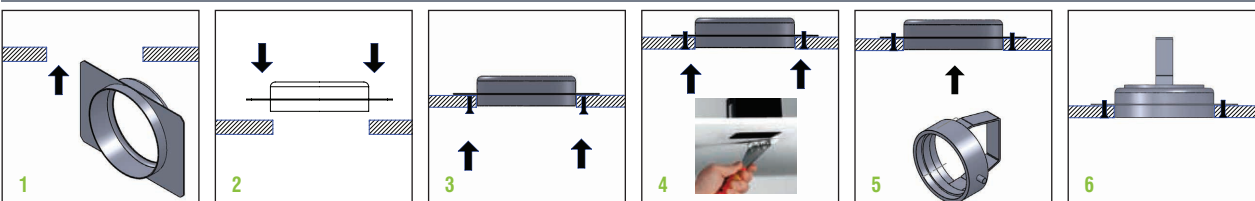


**PRICE LIST**

| CODE  | DESCRIPTION                   | HOLE    | INNER HEIGHT | COLOUR              | Without Control Gear |                             |
|-------|-------------------------------|---------|--------------|---------------------|----------------------|-----------------------------|
| 86753 | SOL1 Q MINI QR-CBC 51 / GU5.3 | 107x107 | 60           | White, Titan, Black |                      | + Transformer 12V Selection |
| 86754 | SOL1 Q MINI PAR16 / GU10      | 107x107 | 60           | White, Titan, Black |                      |                             |
| 86753 | SOL1 Q MINI QR-CBC 51 / GU5.3 | 107x107 | 60           | Colours             |                      | + Transformer 12V Selection |
| 86754 | SOL1 Q MINI PAR16 / GU10      | 107x107 | 60           | Colours             |                      |                             |



**INSTALLATION**



**Colour Codes:**

1 White 2 Titan 3 Black 0 Colours



OSRAM: HALOSPOT 111  
 PHILIPS: ALULINE 111
 PAR 30
 OSRAM: HCI-R 111  
 PHILIPS: CDM-R 111

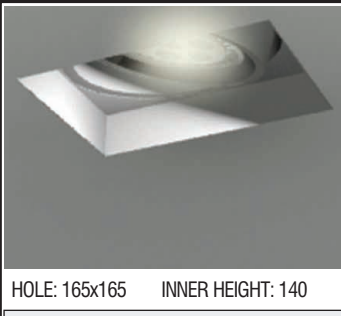
OSRAM: HCI-T  
 PHILIPS: CDM-T
 OSRAM: HCI-TC  
 PHILIPS: CDM-TC

- Outer frame of diecast aluminium with support fins
- Inner adjustable ring of diecast aluminium.
- Glass-reflector holder ring of high durability plastic.
- Faceted reflector of high purity aluminium **Spot**: glossy or **Flood**: matt, at the luminaires with lamps HIT-CE, HIT-TC-CE.
- Transparent protection glass at the luminaires with lamps HIT-CE, HIT-TC-CE.

**SOL 1 Q**  
(RECESSED LUMINAIRES)

|       |                                       |         |              |                     | PRICE LIST           |                              |
|-------|---------------------------------------|---------|--------------|---------------------|----------------------|------------------------------|
| CODE  | DESCRIPTION                           | HOLE    | INNER HEIGHT | COLOUR              | Without Control Gear |                              |
| 86812 | SOL1 Q QR111 max. 100W                | 165x165 | 130          | White, Titan, Black |                      | + Transformer 12V Selection  |
| 86813 | SOL1 Q CDM-R 111 / GX8,5 35-150W      | 165x165 | 130          | White, Titan, Black |                      | + Control Gear Selection HIT |
| 86814 | SOL1 Q PAR 30 / E27 max. 75W          | 165x165 | 130          | White, Titan, Black |                      |                              |
| 86815 | SOL1 Q HIT-TC-CE / G8,5 35-150W Flood | 165x165 | 130          | White, Titan, Black |                      | + Control Gear Selection HIT |
| 86816 | SOL1 Q HIT-TC-CE / G8,5 35-150W Spot  | 165x165 | 130          | White, Titan, Black |                      | + Control Gear Selection HIT |
| 86817 | SOL1 Q HIT-CE / G12 35-150W Flood     | 165x165 | 130          | White, Titan, Black |                      | + Control Gear Selection HIT |
| 86818 | SOL1 Q HIT-CE / G12 35-150W Spot      | 165x165 | 130          | White, Titan, Black |                      | + Control Gear Selection HIT |
| 86812 | SOL1 Q QR111 max. 100W                | 165x165 | 130          | Colours             |                      | + Transformer 12V Selection  |
| 86813 | SOL1 Q CDM-R 111 / GX8,5 35-150W      | 165x165 | 130          | Colours             |                      | + Control Gear Selection HIT |
| 86814 | SOL1 Q PAR 30 / E27 max. 75W          | 165x165 | 130          | Colours             |                      |                              |
| 86815 | SOL1 Q HIT-TC-CE / G8,5 35-150W Flood | 165x165 | 130          | Colours             |                      | + Control Gear Selection HIT |
| 86816 | SOL1 Q HIT-TC-CE / G8,5 35-150W Spot  | 165x165 | 130          | Colours             |                      | + Control Gear Selection HIT |
| 86817 | SOL1 Q HIT-CE / G12 35-150W Flood     | 165x165 | 130          | Colours             |                      | + Control Gear Selection HIT |
| 86818 | SOL1 Q HIT-CE / G12 35-150W Spot      | 165x165 | 130          | Colours             |                      | + Control Gear Selection HIT |

**Colour Codes:**  
 1 White 2 Titan 5 matt Alum. 9 Anodized 0 Colours



LED

- Outer frame of diecast aluminium with support fins
- Inner adjustable ring of diecast aluminium.
- Reflector holder ring of high durability plastic.
- Faceted reflector of high purity aluminium - Spot, Flood, Wide.

HOLE: 165x165 INNER HEIGHT: 140

**SOL 1 Q LED**  
(RECESSED LUMINAIRES)

|       |                |                        |                        |  | PRICE LIST            |
|-------|----------------|------------------------|------------------------|--|-----------------------|
| CODE  | DESCRIPTION    | LED COLOUR             | BEAM COLOUR            | BODY COLOUR                                  | CONTROL GEAR INCLUDED |
| 86837 | SOL1 Q LED 24W | Selection from table A | Selection from table B | Selection from table C (White, Titan, Black) |                       |
| 86837 | SOL1 Q LED 24W | Selection from table A | Selection from table B | Selection from table C (Colours)             |                       |

**LED Colour Codes:**  
 2 Warm 3 Neutral

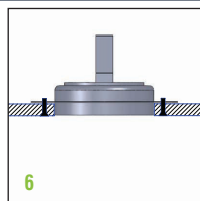
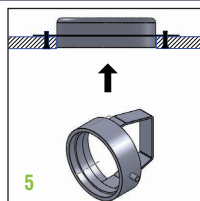
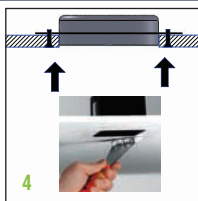
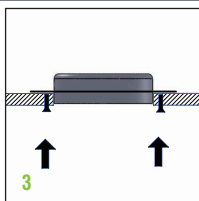
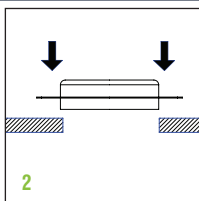
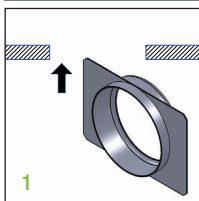



**Beam Codes:**  
 01 narrow 02 wide 03 super-wide

**Body Colour Codes:**  
 0 Colours 1 White 2 Titan 4 Chrome 5 matt Alum.



**INSTALLATION**







|   |                                  |  |
|---|----------------------------------|--|
| OSRAM: HALOSPOT 111<br>PHILIPS: ALULINE 111 | PAR 30                           | OSRAM: HCI-R 111<br>PHILIPS: CDM-R 111 |
| OSRAM: HCI-T<br>PHILIPS: CDM-T              | OSRAM: HCI-TC<br>PHILIPS: CDM-TC |  |

- Outer frame of diecast aluminium with support fins
- Inner adjustable ring of diecast aluminium.
- Glass-reflector holder ring of high durability plastic.
- Faceted reflector of high purity aluminium - Spot: glossy or Flood: matt, at the luminaires with lamps HIT-CE, HIT-TC-CE.
- Transparent protection glass at the luminaires with lamps HIT-CE, HIT-TC-CE.

**SOL 1**  
(RECESSED LUMINAIRES)



|       |                                     |      |              |                     | PRICE LIST           |                              |
|-------|-------------------------------------|------|--------------|---------------------|----------------------|------------------------------|
| CODE  | DESCRIPTION                         | HOLE | INNER HEIGHT | COLOUR              | Without Control Gear |                              |
| 86801 | SOL1 QR111 max. 100W                | 160  | 130          | White, Titan, Black |                      | + Transformer 12V Selection  |
| 86802 | SOL1 CDM-R 111 / GX8,5 35-150W      | 160  | 130          | White, Titan, Black |                      | + Control Gear Selection HIT |
| 86803 | SOL1 PAR 30 / E27 max. 75W          | 160  | 130          | White, Titan, Black |                      |                              |
| 86804 | SOL1 HIT-TC-CE / G8,5 35-150W Flood | 160  | 130          | White, Titan, Black |                      | + Control Gear Selection HIT |
| 86805 | SOL1 HIT-TC-CE / G8,5 35-150W Spot  | 160  | 130          | White, Titan, Black |                      | + Control Gear Selection HIT |
| 86806 | SOL1 HIT-CE / G12 35-150W Flood     | 160  | 130          | White, Titan, Black |                      | + Control Gear Selection HIT |
| 86807 | SOL1 HIT-CE / G12 35-150W Spot      | 160  | 130          | White, Titan, Black |                      | + Control Gear Selection HIT |
| 86801 | SOL1 QR111 max. 100W                | 160  | 130          | Colours             |                      | + Transformer 12V Selection  |
| 86802 | SOL1 CDM-R 111 / GX8,5 35-150W      | 160  | 130          | Colours             |                      | + Control Gear Selection HIT |
| 86803 | SOL1 PAR 30 / E27 max. 75W          | 160  | 130          | Colours             |                      |                              |
| 86804 | SOL1 HIT-TC-CE / G8,5 35-150W Flood | 160  | 130          | Colours             |                      | + Control Gear Selection HIT |
| 86805 | SOL1 HIT-TC-CE / G8,5 35-150W Spot  | 160  | 130          | Colours             |                      | + Control Gear Selection HIT |
| 86806 | SOL1 HIT-CE / G12 35-150W Flood     | 160  | 130          | Colours             |                      | + Control Gear Selection HIT |
| 86807 | SOL1 HIT-CE / G12 35-150W Spot      | 160  | 130          | Colours             |                      | + Control Gear Selection HIT |




HOLE: 160      INNER HEIGHT: 140

LED

- Outer frame of diecast aluminium with support fins.
- Inner adjustable ring of diecast aluminium.
- Reflector holder ring of high durability plastic.
- Faceted reflector of high purity aluminium - Spot, Flood, Wide.

**SOL 1 LED**  
(RECESSED LUMINAIRES)



|       |              |                        |                        |  | PRICE LIST            |  |
|-------|--------------|------------------------|------------------------|--|-----------------------|--|
| CODE  | DESCRIPTION  | LED COLOUR             | BEAM COLOUR            | BODY COLOUR                                  | CONTROL GEAR INCLUDED |  |
| 86835 | SOL1 LED 24W | Selection from table A | Selection from table B | Selection from table C (White, Titan, Black) |                       |  |
| 86835 | SOL1 LED 24W | Selection from table A | Selection from table B | Selection from table C (Colours)             |                       |  |

- A LED Colour Codes:**


2 Warm    3 Neutral

**B Beam Codes:**

01 narrow    02 wide    03 super-wide

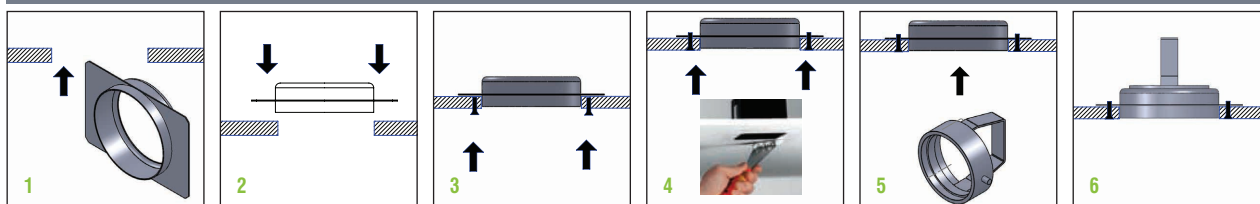
**C Body Colour Codes:**

0 Colours    1 White    2 Titan    4 Chrome    5 matt Alum.






INSTALLATION







**QR111** OSRAM: HALOSPOT 111  
PHILIPS: ALULINE 111




**HIT-CE G12** OSRAM: HCI-T  
PHILIPS: CDM-T

**PAR 30**

**HIT-TC-CE G8,5** OSRAM: HCI-TC  
PHILIPS: CDM-TC


**HI-PAR111** OSRAM: HCI-R 111  
PHILIPS: CDM-R 111

**SOL 2**  
(RECESSED LUMINAIRES)

- Outer frame of diecast aluminium with support fins
- Inner adjustable ring of diecast aluminium.
- Glass-reflector holder ring of high durability plastic.
- Faceted reflector of high purity aluminium - Spot: glossy or Flood: matt, at the luminaires with lamps HIT-CE, HIT-TC-CE.
- Transparent protection glass at the luminaires with lamps HIT-CE, HIT-TC-CE.




|       |                                     |               |        |        | PRICE LIST           |  |                              |
|-------|-------------------------------------|---------------|--------|--------|----------------------|--|------------------------------|
| CODE  | DESCRIPTION                         | HOLE DIAMETER | HEIGHT | COLOUR | Without Control Gear |  |                              |
| 86823 | SOL2 QR111 max. 100W                | 140           | 150    | 125    | White, Titan, Black  |  | + Transformer 12V Selection  |
| 86824 | SOL2 CDM-R 111 / GX8,5 35-150W      | 140           | 150    | 125    | White, Titan, Black  |  | + Control Gear Selection HIT |
| 86825 | SOL2 PAR 30 / E27 max. 75W          | 140           | 150    | 125    | White, Titan, Black  |  |                              |
| 86826 | SOL2 HIT-TC-CE / G8,5 35-150W Flood | 140           | 150    | 125    | White, Titan, Black  |  | + Control Gear Selection HIT |
| 86827 | SOL2 HIT-TC-CE / G8,5 35-150W Spot  | 140           | 150    | 125    | White, Titan, Black  |  | + Control Gear Selection HIT |
| 86828 | SOL2 HIT-CE / G12 35-150W Flood     | 140           | 150    | 125    | White, Titan, Black  |  | + Control Gear Selection HIT |
| 86829 | SOL2 HIT-CE / G12 35-150W Spot      | 140           | 150    | 125    | White, Titan, Black  |  | + Control Gear Selection HIT |
| 86823 | SOL2 QR111 max. 100W                | 140           | 150    | 125    | Colours              |  | + Transformer 12V Selection  |
| 86824 | SOL2 CDM-R 111 / GX8,5 35-150W      | 140           | 150    | 125    | Colours              |  | + Control Gear Selection HIT |
| 86825 | SOL2 PAR 30 / E27 max. 75W          | 140           | 150    | 125    | Colours              |  |                              |
| 86826 | SOL2 HIT-TC-CE / G8,5 35-150W Flood | 140           | 150    | 125    | Colours              |  | + Control Gear Selection HIT |
| 86827 | SOL2 HIT-TC-CE / G8,5 35-150W Spot  | 140           | 150    | 125    | Colours              |  | + Control Gear Selection HIT |
| 86828 | SOL2 HIT-CE / G12 35-150W Flood     | 140           | 150    | 125    | Colours              |  | + Control Gear Selection HIT |
| 86829 | SOL2 HIT-CE / G12 35-150W Spot      | 140           | 150    | 125    | Colours              |  | + Control Gear Selection HIT |



**LED**

- Outer frame of diecast aluminium with support fins.
- Inner adjustable ring of diecast aluminium.
- Reflector holder ring of high durability plastic.
- Faceted reflector of high purity aluminium - Spot, Flood, Wide.

**SOL 2 LED**  
(RECESSED LUMINAIRES)






HOLE: 140 DIAMETER: 150 HEIGHT: 135

|       |              |                        |                        |  | PRICE LIST            |  |
|-------|--------------|------------------------|------------------------|--|-----------------------|--|
| CODE  | DESCRIPTION  | LED COLOUR             | BEAM COLOUR            | BODY COLOUR                                  | CONTROL GEAR INCLUDED |  |
| 86839 | SOL2 LED 24W | Selection from table A | Selection from table B | Selection from table C (White, Titan, Black) |                       |  |
| 86839 | SOL2 LED 24W | Selection from table A | Selection from table B | Selection from table C (Colours)             |                       |  |

**LED Colour Codes:**

2 Warm 3 Neutral



**Beam Codes:**

01 narrow 02 wide 03 super-wide

**Body Colour Codes:**

0 Colours 1 White 2 Titan 3 Black