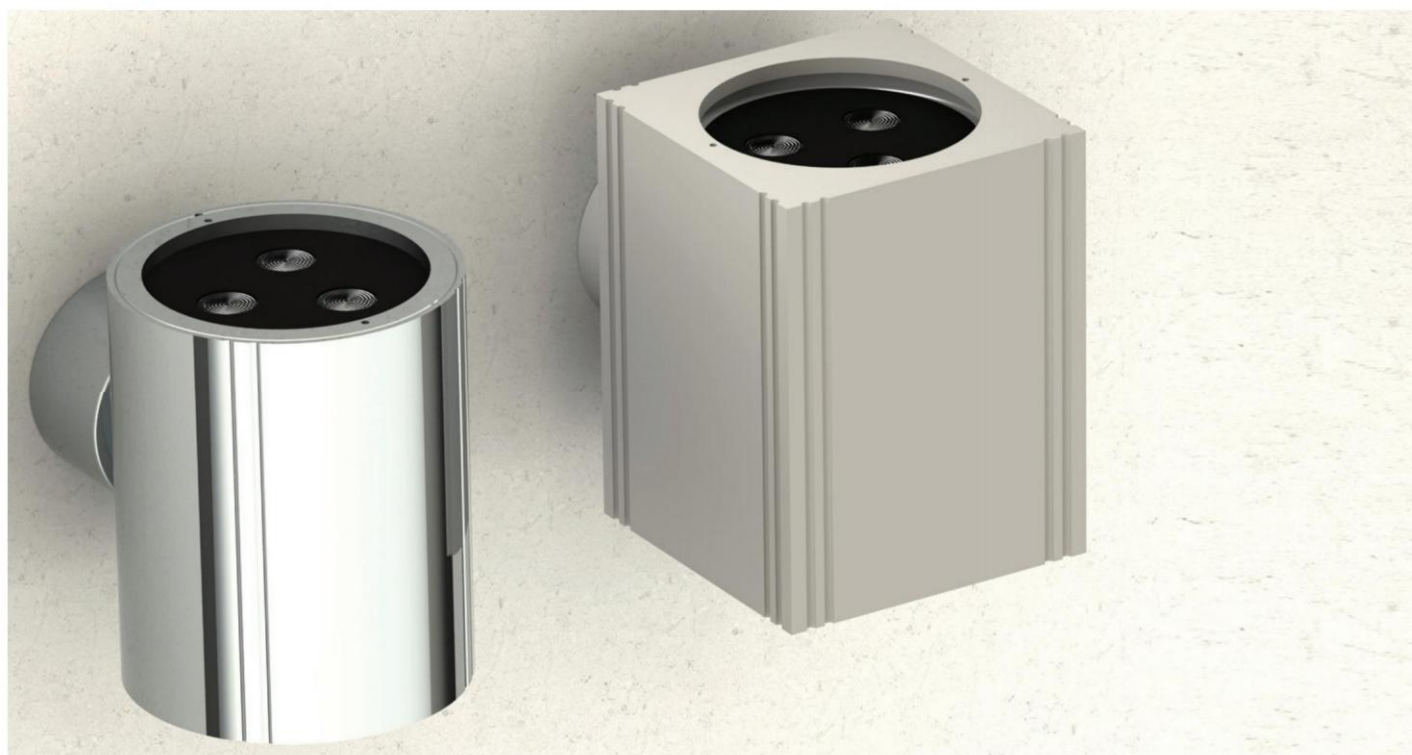


BEAM 3 / BEAM 4 LED



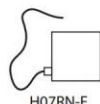
Surface wall mounted luminaire with power LED chip. It is ideal for a wide range of outdoor applications due to its high protection degree IP65. Available with one or two-way light distribution and with different beam angles.

Technical Features

- Aluminium body, painted electrostatically in selected colour.
- Mounting base from die-cast aluminium.
- Tempered protection glass.
- Beam distribution lens.
- Silicone sealant.
- Pure light without IR/UV radiation.
- From 3W with 300 Lumen up to 12W 900 Lumen.
- Operation life: 50,000 hours with efficiency > 70% of the initial luminous flux.

Upon request:

Available with highest colour rendering index (CRI)



To ensure the degree of protection (sealing), the use of flexible power supply cable type H07RN-F is required.

BEAM 3 / BEAM 4 LED

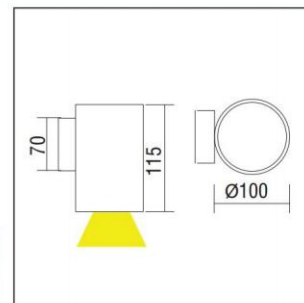
BEAM 3 - ONE WAY



CE	F	850°C	IP 65
LED	350/500mA	ta 25°C	

- Beams: Spot, Medium, Wide.
- 3x1W power consumption driven at 350mA.
- 3x2W power consumption driven at 500mA.
- Efficiency:
 - 3x1W: 4000 K: 321 Lumen, CRI: min. 75
 - 3x1W: 3000 K: 300 Lumen, CRI: min. 80
 - 3x2W: 4000 K: 450 Lumen, CRI: min. 75
 - 3x2W: 3000 K: 420 Lumen, CRI: min. 80
- Maximum: 107 Lm/W

Code	Description	Kg
85731	BEAM3 ONE WAY 3 LED x 1W (Integrated Control Gear)	1,600
85732	BEAM3 ONE WAY 3 LED x 2W (Integrated Control Gear)	1,600



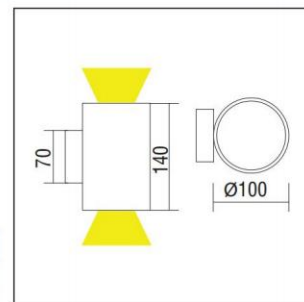
BEAM 3 - TWO WAY



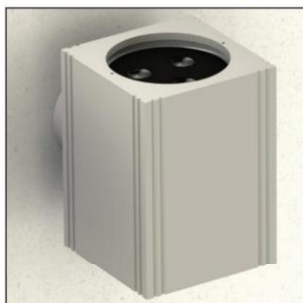
CE	F	850°C	IP 65
LED	350/500mA	ta 25°C	

- Beams: Spot, Medium, Wide.
- 6x1W power consumption driven at 350mA.
- 6x2W power consumption driven at 500mA.
- Efficiency:
 - 3+3x1W: 4000 K: 321+321 Lumen, CRI: min. 75
 - 3+3x1W: 3000 K: 300+300 Lumen, CRI: min. 80
 - 3+3x2W: 4000 K: 450+450 Lumen, CRI: min. 75
 - 3+3x2W: 3000 K: 420+420 Lumen, CRI: min. 80
- Maximum: 107 Lm/W

Code	Description	Kg
85736	BEAM3 3+3 LED x 1W (Integrated Control Gear)	2,000
85737	BEAM3 3+3 LED x 2W (Integrated Control Gear)	2,000



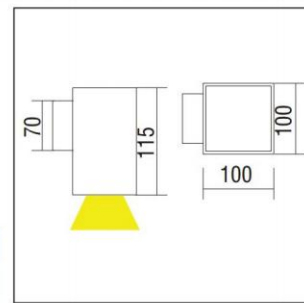
BEAM 4 - ONE WAY



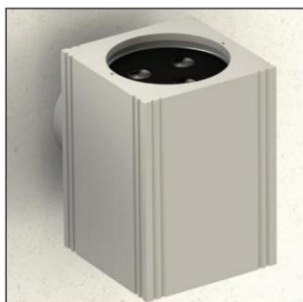
CE	F	850°C	IP 65
LED	350/500mA	ta 25°C	

- Beams: Spot, Medium, Wide.
- 3x1W power consumption driven at 350mA.
- 3x2W power consumption driven at 500mA.
- Efficiency:
 - 3x1W: 4000 K: 321 Lumen, CRI: min. 75
 - 3x1W: 3000 K: 300 Lumen, CRI: min. 80
 - 3x2W: 4000 K: 450 Lumen, CRI: min. 75
 - 3x2W: 3000 K: 420 Lumen, CRI: min. 80
- Maximum: 107 Lm/W

Code	Description	Kg
85741	BEAM4 ONE WAY 3 LED x 1W (Integrated Control Gear)	2,500
85742	BEAM4 ONE WAY 3 LED x 2W (Integrated Control Gear)	2,500



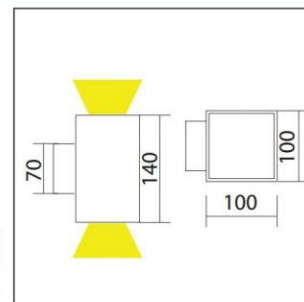
BEAM 4 - TWO WAY



CE	F	850°C	IP 65
LED	350/500mA	ta 25°C	

- Beams: Spot, Medium, Wide.
- 6x1W power consumption driven at 350mA.
- 6x2W power consumption driven at 500mA.
- Efficiency:
 - 3+3x1W: 4000 K: 321+321 Lumen, CRI: min. 75
 - 3+3x1W: 3000 K: 300+300 Lumen, CRI: min. 80
 - 3+3x2W: 4000 K: 450+450 Lumen, CRI: min. 75
 - 3+3x2W: 3000 K: 420+420 Lumen, CRI: min. 80
- Maximum: 107 Lm/W

Code	Description	Kg
85746	BEAM4 3+3 LED x 1W (Integrated Control Gear)	2,900
85747	BEAM4 3+3 LED x 2W (Integrated Control Gear)	2,900



LED COLOUR CODES:

- 2 Warm
- 3 Neutral

Beams Codes:

- 10 spot/spot
- 30 medium/medium
- 45 wide/wide
- 90 spot/medium
- 91 spot/wide
- 92 medium/wide

Colour Codes:

- 0 Colours
- 1 White
- 2 Titan
- 3 Black
- 4 Chrome
- 5 matt Alum.